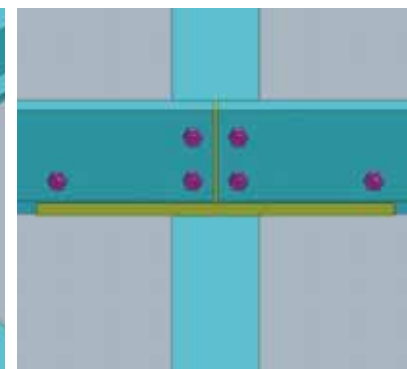
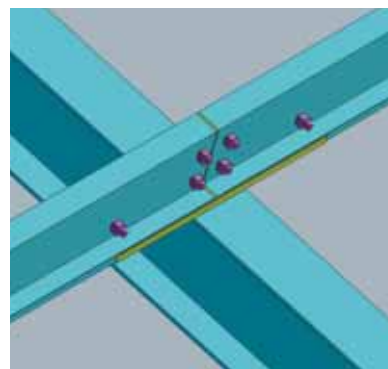
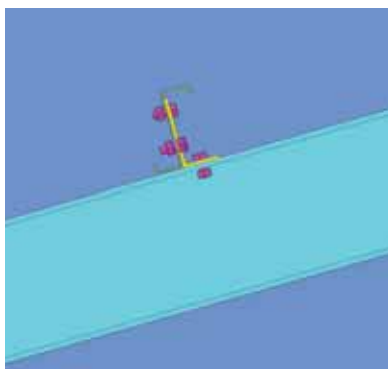
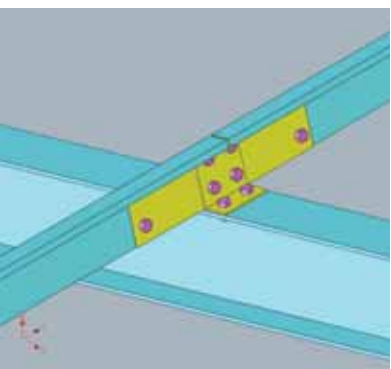
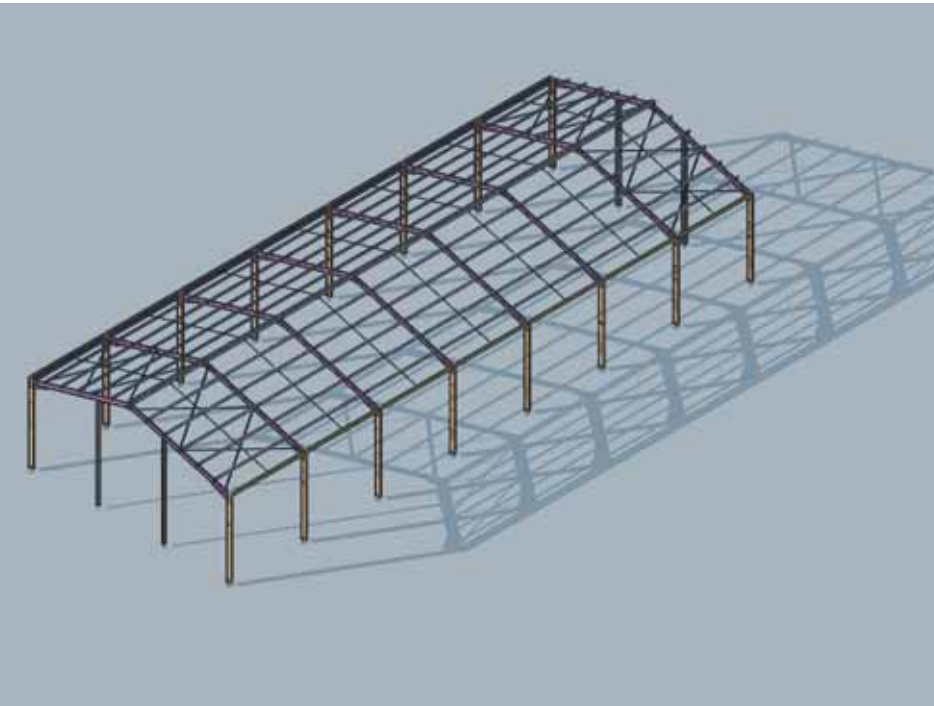


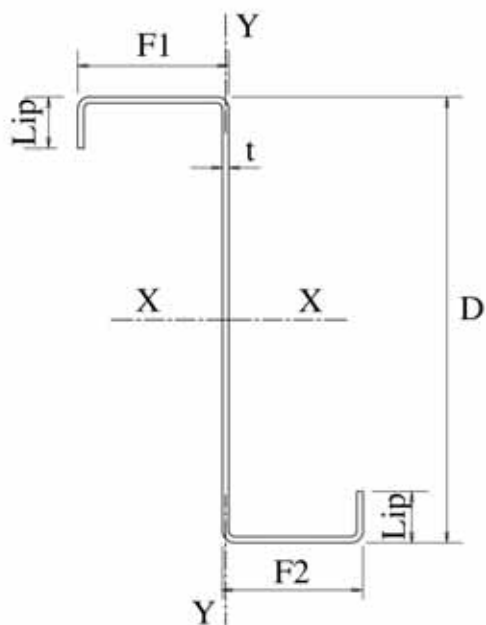
Roll Forming ZED PURLINS



**NICOLAIDES & KOUNTOURIS
METAL COMPANY LTD**

ESTABLISHED 1977

GERI INDUSTRIAL ESTATE
P.O.BOX 12665 - 2251 NICOSIA - CYPRUS
T: +357 22 482 000, F: +357 22 485 380, E: nkm@cytanet.com.cy
www.nkmetal.com.cy



ZED-PURLINS DIMENSIONS & PROPERTIES													
Section Ref.	Depth D	Thick-ness t	Bottom Flange F1	Bottom Flange F2	Top Lip	Bottom Lip	Wt per metre	Area	Ix-x	Zx-x	Iy-y	Zy-y	ry-y
	mm	mm	mm	mm	mm	mm	kg	cm ²	cm ⁴	cm ³	cm ⁴	cm ³	cm
150/15	150	1.5	56	51	20	20	3.350	4.346	150.09	19.67	29.47	5.73	2.61
150/16	150	1.6	56	51	20	20	3.554	4.628	159.49	20.91	31.22	6.07	2.59
150/18	150	1.8	56	51	20	20	3.985	5.189	178.18	23.36	34.65	6.75	2.58
150/20	150	2.0	56	51	20	20	4.427	5.746	196.59	25.77	37.97	7.41	2.57
150/25	150	2.5	56	51	20	20	5.495	7.068	238.48	31.25	45.14	8.86	2.53
150/30	150	3.0	56	51	20	20	6.594	8.395	280.33	36.73	52.11	10.28	2.49
200/16	200	1.6	67	60	20	20	4.396	5.715	343.06	33.83	46.54	7.72	2.85
200/18	200	1.8	67	60	20	20	4.946	6.413	383.77	37.85	51.73	8.59	2.84
200/20	200	2.0	67	60	20	20	5.495	7.106	424.01	41.82	56.79	9.45	2.83
200/25	200	2.5	67	60	20	20	6.869	8.758	517.23	51.01	67.88	11.34	2.78
200/30	200	3.0	67	60	20	20	8.243	10.435	610.47	60.19	78.72	13.21	2.75

*Please contact our Technical Department for advice.

Nicolaides & Kountouris - ZED PURLINS are thin-gauge lightweight construction elements produced by roll forming which are mainly used as roof purlins, and also as secondary supporting beam members.

Z - purlins are produced in a variation of depths and material thicknesses and cut to different overall lengths to suit.

Available sheet thickness: 1.5 mm, 1.6 mm, 1.8 mm, 2.0 mm 2.5 mm and 3.0 mm.

Material Grade and Corrosion protection:

The minimum material grade used is S280GD steel.

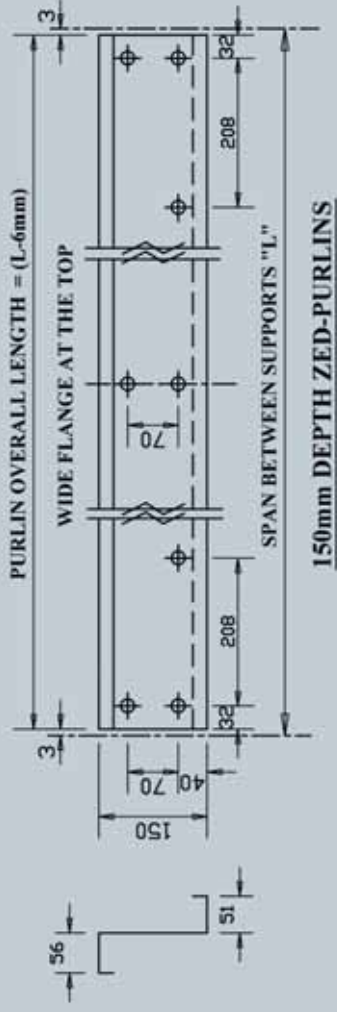
For corrosion protection the following methods are used:

- a) Hot dip galvanization to BS EN 10326:2004 and BS EN 10143:2006.
- b) Z275 zinc coating in accordance with BS EN 10147:2000.

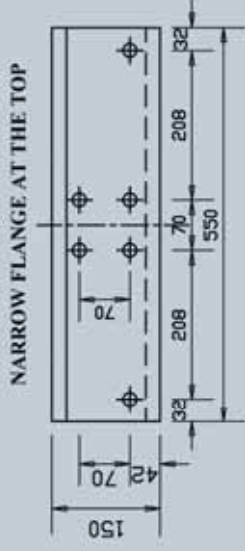
Other galvanized coatings may be available.

SLEEVED SYSTEM PURLINS STANDARD HOLING DETAILS

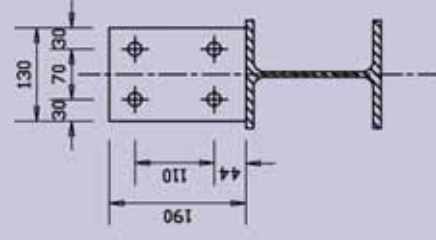
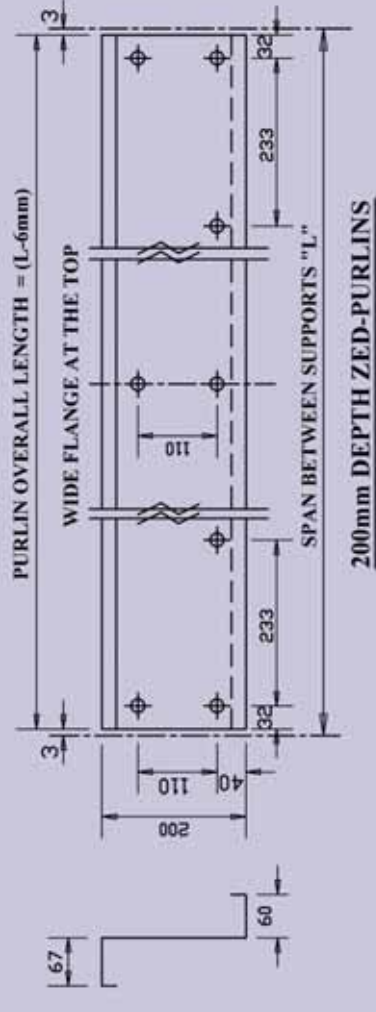
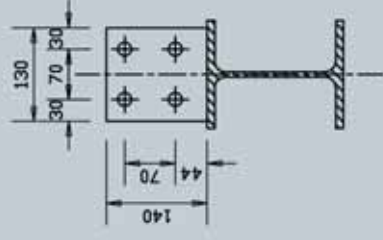
Purlin Standard Holing



Sleeve

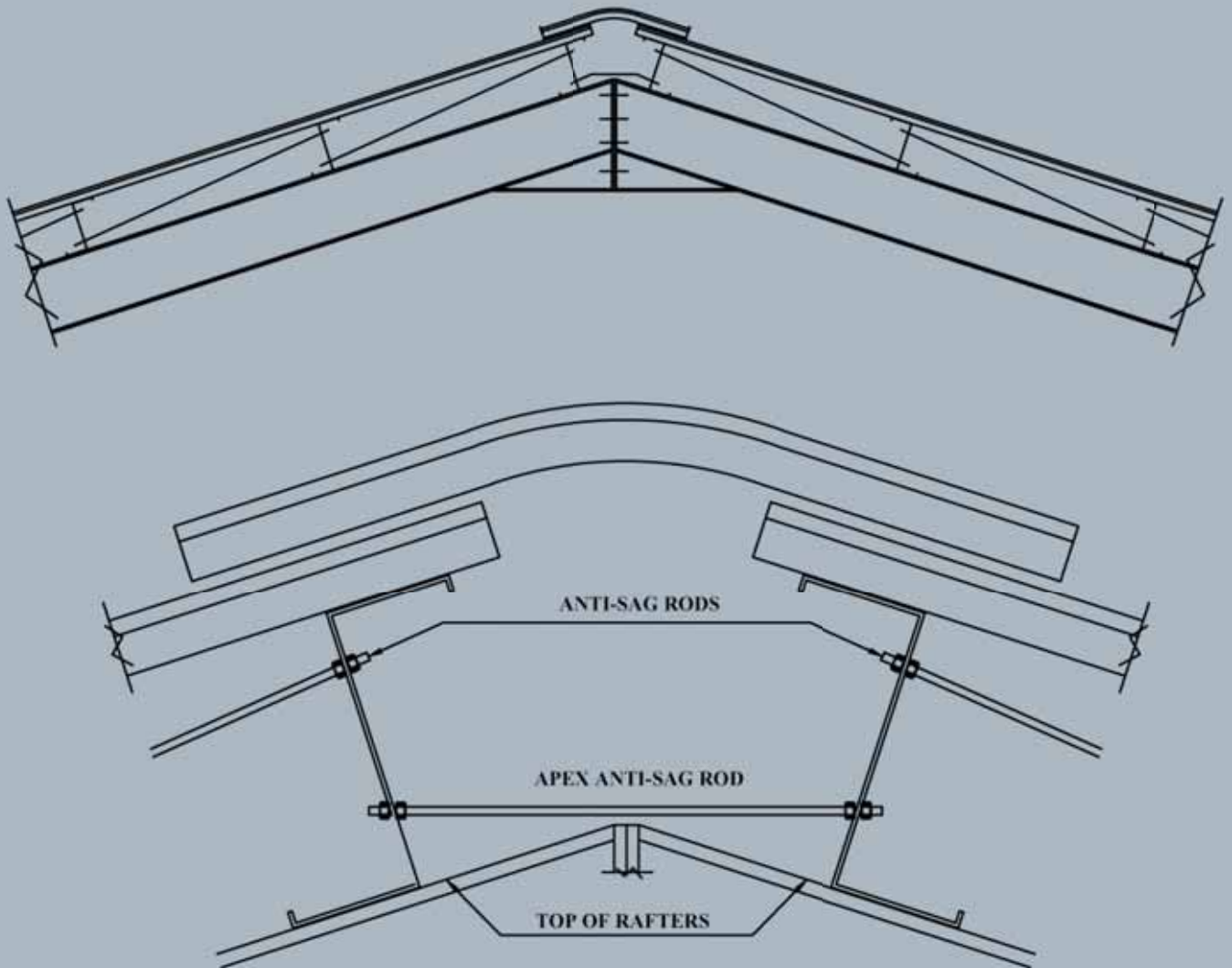


Cleat



Note: 1. All fixing holes 18mm Dia. To accommodate M16 Bolts
 2. Sag rod holes 14mm Dia.

Anti-Sag Rods Details



Anti-Sag Rods Requirements

ZED PURLIN SPAN LENGTH	ANTI-SAG RODS PER SPAN
UP TO 4.0m	0
4.0m TO 6.0m	1
OVER 6.0m	2

Zed Purlin Load Tables

Span metres	Section ref.	Total U.D.L. KN	*APPLIED LOADS kN/m ² CENTRES OF PURLINS IN METRES										
			1.00	1.20	1.40	1.60	1.80	2.00	2.20	2.40	2.60	2.80	3.00
3.50	150/15	11.41	3.26	2.72	2.33	2.04	1.81	1.63	1.48	1.36	1.25	1.16	1.09
	150/16	12.14	3.47	2.89	2.48	2.17	1.93	1.73	1.58	1.45	1.33	1.24	1.16
	150/18	13.58	3.88	3.23	2.77	2.43	2.16	1.94	1.76	1.62	1.49	1.39	1.29
	150/20	14.99	4.28	3.57	3.06	2.68	2.38	2.14	1.95	1.78	1.65	1.53	1.43
	150/25	18.18	5.19	4.33	3.71	3.25	2.89	2.60	2.36	2.16	2.00	1.86	1.73
	200/16	19.60	5.60	4.67	4.00	3.50	3.11	2.80	2.55	2.33	2.15	2.00	1.87
	200/18	22.01	6.29	5.24	4.49	3.93	3.49	3.14	2.86	2.62	2.42	2.25	2.10
	200/20	24.35	6.96	5.80	4.97	4.35	3.87	3.48	3.16	2.90	2.68	2.48	2.32
	200/25	29.74	8.50	7.08	6.07	5.31	4.72	4.25	3.86	3.54	3.27	3.03	2.83
	200/30	35.09	10.03	8.35	7.16	6.27	5.57	5.01	4.56	4.18	3.86	3.58	3.34
4.00	150/15	9.95	2.49	2.07	1.78	1.55	1.38	1.24	1.13	1.04	0.96	0.89	0.83
	150/16	10.60	2.65	2.21	1.89	1.66	1.47	1.33	1.20	1.10	1.02	0.95	0.88
	150/18	11.86	2.97	2.47	2.12	1.85	1.65	1.48	1.35	1.24	1.14	1.06	0.99
	150/20	13.08	3.27	2.73	2.34	2.04	1.82	1.64	1.49	1.36	1.26	1.17	1.09
	150/25	15.87	3.97	3.31	2.83	2.48	2.20	1.98	1.80	1.65	1.53	1.42	1.32
	200/16	17.11	4.28	3.56	3.06	2.67	2.38	2.14	1.94	1.78	1.65	1.53	1.43
	200/18	19.22	4.81	4.00	3.43	3.00	2.67	2.40	2.18	2.00	1.85	1.72	1.60
	200/20	21.27	5.32	4.43	3.80	3.32	2.95	2.66	2.42	2.22	2.05	1.90	1.77
	200/25	25.97	6.49	5.41	4.64	4.06	3.61	3.25	2.95	2.71	2.50	2.32	2.16
	200/30	30.64	7.66	6.38	5.47	4.79	4.26	3.83	3.48	3.19	2.95	2.74	2.55
4.50	150/15	8.82	1.96	1.63	1.40	1.23	1.09	0.98	0.89	0.82	0.75	0.70	0.65
	150/16	9.39	2.09	1.74	1.49	1.30	1.16	1.04	0.95	0.87	0.80	0.75	0.70
	150/18	10.51	2.34	1.95	1.67	1.46	1.30	1.17	1.06	0.97	0.90	0.83	0.78
	150/20	11.60	2.58	2.15	1.84	1.61	1.43	1.29	1.17	1.07	0.99	0.92	0.86
	150/25	14.07	3.13	2.61	2.23	1.95	1.74	1.56	1.42	1.30	1.20	1.12	1.04
	200/16	15.18	3.37	2.81	2.41	2.11	1.87	1.69	1.53	1.41	1.30	1.20	1.12
	200/18	17.05	3.79	3.16	2.71	2.37	2.10	1.89	1.72	1.58	1.46	1.35	1.26
	200/20	18.87	4.19	3.49	3.00	2.62	2.33	2.10	1.91	1.75	1.61	1.50	1.40
	200/25	23.04	5.12	4.27	3.66	3.20	2.84	2.56	2.33	2.13	1.97	1.83	1.71
	200/30	27.18	6.04	5.03	4.31	3.78	3.36	3.02	2.75	2.52	2.32	2.16	2.01
5.00	150/15	7.92	1.58	1.32	1.13	0.99	0.88	0.79	0.72	0.66	0.61	0.57	0.53
	150/16	8.43	1.69	1.41	1.20	1.05	0.94	0.84	0.77	0.70	0.65	0.60	0.56
	150/18	9.43	1.89	1.57	1.35	1.18	1.05	0.94	0.86	0.79	0.73	0.67	0.63
	150/20	10.41	2.08	1.74	1.49	1.30	1.16	1.04	0.95	0.87	0.80	0.74	0.69
	150/25	12.62	2.52	2.10	1.80	1.58	1.40	1.26	1.15	1.05	0.97	0.90	0.84
	200/16	13.63	2.73	2.27	1.95	1.70	1.51	1.36	1.24	1.14	1.05	0.97	0.91
	200/18	15.31	3.06	2.55	2.19	1.91	1.70	1.53	1.39	1.28	1.18	1.09	1.02
	200/20	16.94	3.39	2.82	2.42	2.12	1.88	1.69	1.54	1.41	1.30	1.21	1.13
	200/25	20.68	4.14	3.45	2.95	2.59	2.30	2.07	1.88	1.72	1.59	1.48	1.38
	200/30	24.40	4.88	4.07	3.49	3.05	2.71	2.44	2.22	2.03	1.88	1.74	1.63
5.50	150/15	7.17	1.30	1.09	0.93	0.81	0.72	0.65	0.59	0.54	0.50	0.47	0.43
	150/16	7.64	1.39	1.16	0.99	0.87	0.77	0.69	0.63	0.58	0.53	0.50	0.46
	150/18	8.54	1.55	1.29	1.11	0.97	0.86	0.78	0.71	0.65	0.60	0.55	0.52
	150/20	9.43	1.71	1.43	1.22	1.07	0.95	0.86	0.78	0.71	0.66	0.61	0.57
	150/25	11.43	2.08	1.73	1.48	1.30	1.15	1.04	0.94	0.87	0.80	0.74	0.69
	200/16	12.36	2.25	1.87	1.61	1.40	1.25	1.12	1.02	0.94	0.86	0.80	0.75
	200/18	13.88	2.52	2.10	1.80	1.58	1.40	1.26	1.15	1.05	0.97	0.90	0.84
	200/20	15.36	2.79	2.33	1.99	1.75	1.55	1.40	1.27	1.16	1.07	1.00	0.93
	200/25	18.75	3.41	2.84	2.44	2.13	1.89	1.70	1.55	1.42	1.31	1.22	1.14
	200/30	22.13	4.02	3.35	2.87	2.51	2.24	2.01	1.83	1.68	1.55	1.44	1.34

Zed Purlin Load Tables

Span metres	Section ref.	Total U.D.L. KN	*APPLIED LOADS kN/m ² CENTRES OF PURLINS IN METRES										
			1.00	1.20	1.40	1.60	1.80	2.00	2.20	2.40	2.60	2.80	3.00
6.00	150/15	6.45	1.08	0.90	0.77	0.67	0.60	0.54	0.49	0.45	0.41	0.38	0.36
	150/16	6.86	1.14	0.95	0.82	0.71	0.64	0.57	0.52	0.48	0.44	0.41	0.38
	150/18	7.66	1.28	1.06	0.91	0.80	0.71	0.64	0.58	0.53	0.49	0.46	0.43
	150/20	8.45	1.41	1.17	1.01	0.88	0.78	0.70	0.64	0.59	0.54	0.50	0.47
	150/25	10.25	1.71	1.42	1.22	1.07	0.95	0.85	0.78	0.71	0.66	0.61	0.57
	200/16	11.30	1.88	1.57	1.35	1.18	1.05	0.94	0.86	0.78	0.72	0.67	0.63
	200/18	12.69	2.12	1.76	1.51	1.32	1.18	1.06	0.96	0.88	0.81	0.76	0.71
	200/20	14.04	2.34	1.95	1.67	1.46	1.30	1.17	1.06	0.98	0.90	0.84	0.78
	200/25	17.14	2.86	2.38	2.04	1.79	1.59	1.43	1.30	1.19	1.10	1.02	0.95
	200/30	20.22	3.37	2.81	2.41	2.11	1.87	1.69	1.53	1.40	1.30	1.20	1.12
6.50	150/15	5.46	0.84	0.70	0.60	0.53	0.47	0.42	0.38	0.35	0.32	0.30	0.28
	150/16	5.80	0.89	0.74	0.64	0.56	0.50	0.45	0.41	0.37	0.34	0.32	0.30
	150/18	6.48	1.00	0.83	0.71	0.62	0.55	0.50	0.45	0.42	0.38	0.36	0.33
	150/20	7.15	1.10	0.92	0.79	0.69	0.61	0.55	0.50	0.46	0.42	0.39	0.37
	150/25	8.67	1.33	1.11	0.95	0.83	0.74	0.67	0.61	0.56	0.51	0.48	0.44
	200/16	10.39	1.60	1.33	1.14	1.00	0.89	0.80	0.73	0.67	0.61	0.57	0.53
	200/18	11.68	1.80	1.50	1.28	1.12	1.00	0.90	0.82	0.75	0.69	0.64	0.60
	200/20	12.92	1.99	1.66	1.42	1.24	1.10	0.99	0.90	0.83	0.76	0.71	0.66
	200/25	15.77	2.43	2.02	1.73	1.52	1.35	1.21	1.10	1.01	0.93	0.87	0.81
	200/30	18.61	2.86	2.39	2.05	1.79	1.59	1.43	1.30	1.19	1.10	1.02	0.95
7.00	**150/16	4.97	0.71	0.59	0.51	0.44	0.39	0.36	0.32	0.30	0.27	0.25	0.24
	**150/18	5.55	0.79	0.66	0.57	0.50	0.44	0.40	0.36	0.33	0.30	0.28	0.26
	**150/20	6.12	0.87	0.73	0.62	0.55	0.49	0.44	0.40	0.36	0.34	0.31	0.29
	**150/25	7.42	1.06	0.88	0.76	0.66	0.59	0.53	0.48	0.44	0.41	0.38	0.35
	200/16	9.62	1.37	1.15	0.98	0.86	0.76	0.69	0.62	0.57	0.53	0.49	0.46
	200/18	10.80	1.54	1.29	1.10	0.96	0.86	0.77	0.70	0.64	0.59	0.55	0.51
	200/20	11.96	1.71	1.42	1.22	1.07	0.95	0.85	0.78	0.71	0.66	0.61	0.57
	200/25	14.60	2.09	1.74	1.49	1.30	1.16	1.04	0.95	0.87	0.80	0.74	0.70
	200/30	17.22	2.46	2.05	1.76	1.54	1.37	1.23	1.12	1.03	0.95	0.88	0.82
	7.50	**150/18	4.79	0.64	0.53	0.46	0.40	0.35	0.32	0.29	0.27	0.25	0.23
**150/20		5.28	0.70	0.59	0.50	0.44	0.39	0.35	0.32	0.29	0.27	0.25	0.23
**150/25		6.40	0.85	0.71	0.61	0.53	0.47	0.43	0.39	0.36	0.33	0.30	0.28
200/16		8.95	1.19	0.99	0.85	0.75	0.66	0.60	0.54	0.50	0.46	0.43	0.40
200/18		10.05	1.34	1.12	0.96	0.84	0.74	0.67	0.61	0.56	0.52	0.48	0.45
200/20		11.12	1.48	1.24	1.06	0.93	0.82	0.74	0.67	0.62	0.57	0.53	0.49
200/25		13.57	1.81	1.51	1.29	1.13	1.01	0.90	0.82	0.75	0.70	0.65	0.60
200/30		16.01	2.13	1.78	1.52	1.33	1.19	1.07	0.97	0.89	0.82	0.76	0.71
8.00	200/16	8.22	1.03	0.86	0.73	0.64	0.57	0.51	0.47	0.43	0.40	0.37	0.34
	200/18	9.20	1.15	0.96	0.82	0.72	0.64	0.58	0.52	0.48	0.44	0.41	0.38
	200/20	10.16	1.27	1.06	0.91	0.79	0.71	0.64	0.58	0.53	0.49	0.45	0.42
	200/25	12.39	1.55	1.29	1.11	0.97	0.86	0.77	0.70	0.65	0.60	0.55	0.52
	200/30	14.62	1.83	1.52	1.31	1.14	1.02	0.91	0.83	0.76	0.70	0.65	0.61

* a) Applied loads are total applied UNFACTORED (Dead + Live) loads.
 b) Tables are applicable for continuous purlins. If purlins are simply supported use up to 70% of loads given.

** Suggested to be used for internal purposes, partitions and ceilings where deflection is not critical.